

# **CLASS C & SOME CLASS A MECHANICAL LOCKS**

USER'S MANUAL & INSTALLATION GUIDE



# TABLE OF CONTENTS

**01** Lock Front &  
Back Explained

---

**02** Welcome &  
Package Contents

---

**03** Full Walkthrough  
Video Instructions

---

**04** Removal of Existing  
Door Handle

---

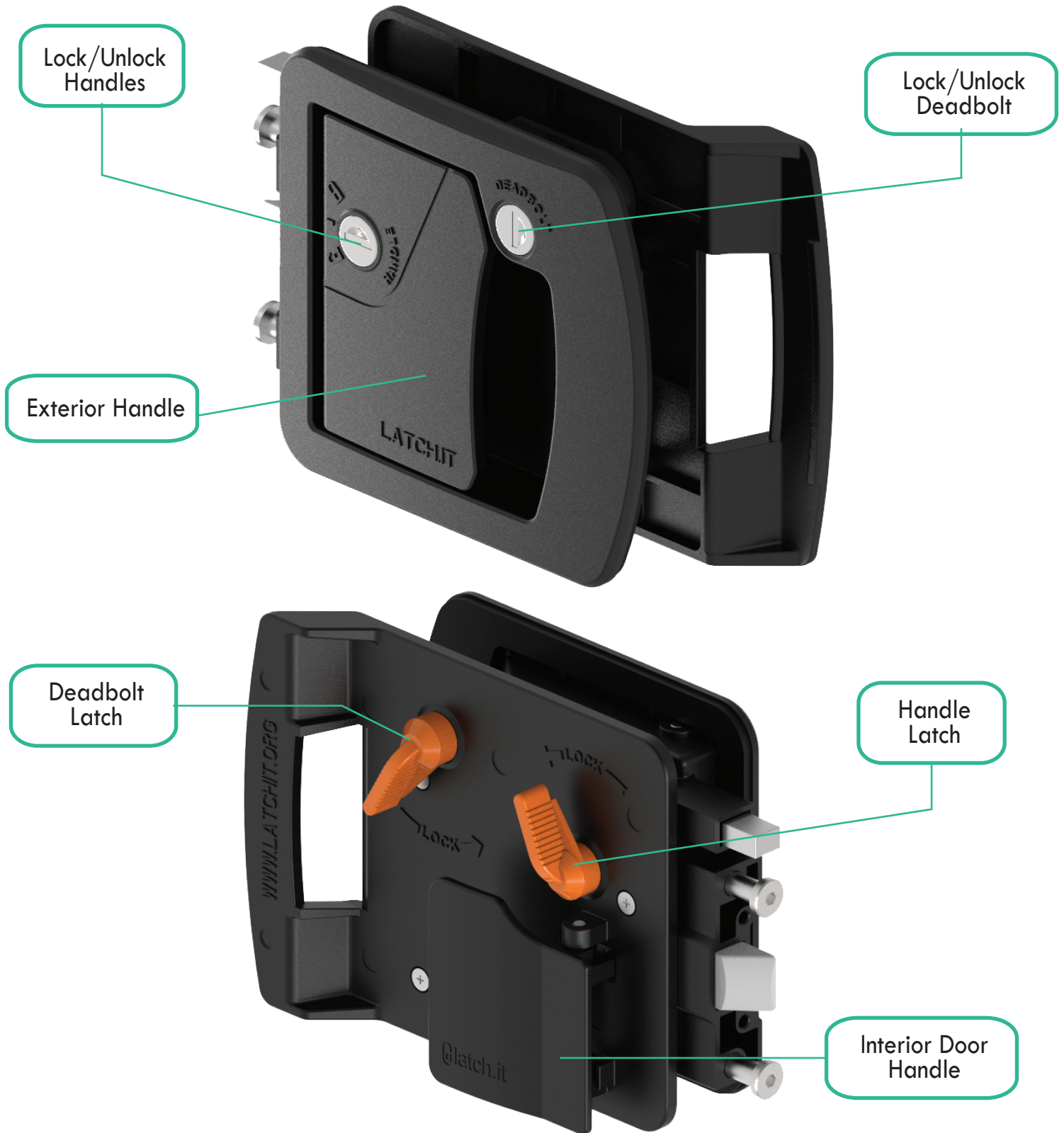
**05** Install Your New RV  
Door Lock

**07** How to Remove the  
Top Lock Cylinder

---

**08** Frequently Asked Questions

# 01 Lock Front & Back Explained



# WELCOME TO THE FAMILY!



Thanks for purchasing our Latch.it RV Door Lock! We are a family owned American business that cares about your safety and security!



Please review, read and understand ALL instructions to ensure proper functionality.

If you have any questions or concerns, don't hesitate to reach out to us, we are always available at [info@latchit.org](mailto:info@latchit.org)


**SEE FULL VIDEO INSTRUCTIONS AT**  
[www.latchit.org](http://www.latchit.org)

## PACKAGE CONTENTS

- 1 x RV Door Lock
- 1 x Mounting Hardware Set
- 1 x Easy-to-Install User Manual
- 2x Mechanical Keys
- Extra Length Screws

## 03 Full Walkthrough & Video Instructions

Don't want to READ all the instructions?

 **We got your back!** 

Simply scan the QR code with your smart phone camera & head over to the How-To-Video section of the site.



**OR VISIT**  
[latchit.org/how-to-videos](http://latchit.org/how-to-videos)



**SCAN ME!**

## 04 Removal of Existing Door Handle

1. Securely latch your RV door in the open position.
2. Remove all screws from the interior of your existing door handle holding it in place.
3. Carefully remove the interior lock half from the door.
4. Carefully slide out the exterior lock half from the door.
5. Clean lock hole from any left-over debris, paint, etc.
6. In some cases, you may be required to shave off, file or grind the lock hole a little to open it up to ensure best fitment of your NEW Lock.
7. If required, remove old striker plate by removing screws and install new included striker plate with new hardware.
8. Dispose or keep old parts for future needs.

SEE FULL VIDEO TUTORIALS AT



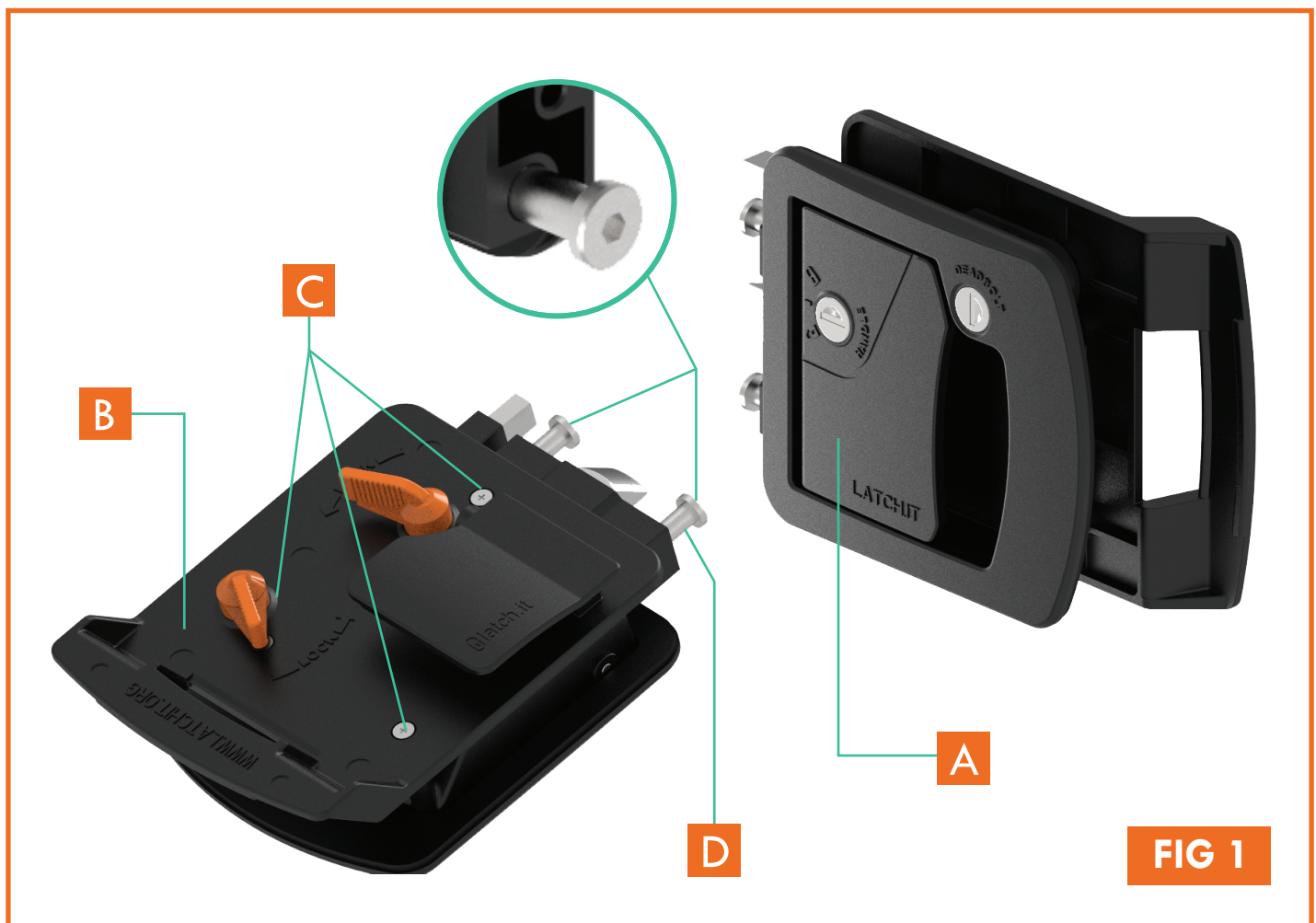
## 05 Install Your New RV Door Lock

1. Place your new Latch.it lock and all its components on a smooth and soft surface to avoid scratches.

 Record your mechanic key # in case it is lost! — —

2. Make sure all screws (**Fig. 1C**) from the back are removed to separate front face (**Fig. 1A**) and back face (**Fig. 1B**)

3. Carefully slide the front face of your new lock into the cutout by first inserting the side with striker plate guide-pins (**Fig. 1D**) and then the body of the lock.



## 06 Install Your New RV Door Lock

4. Hold the front face (**Fig. 1A**) in place and gather the interior half of the lock (**Fig. 1B**).
5. Align and attach the interior half (**Fig. 1B**). Make sure the **back handle is on the closed position** when mating it to the front face.
6. Using a Phillips screwdriver, re-install all screws on the lock (**Fig. 1C**). Only tighten enough to keep the lock secured against the door.
7. Align, center and level the lock against the door. Once in the perfect position, fully tighten. Be sure to not over tighten.



*IF INTERIOR HANDLE SLIPS AND GETS STUCK IN THE OPEN POSITION, ENSURE ALL SCREWS ARE FULLY TIGHTENED AND DOOR THICKNESS IS WITHIN REQUIREMENT.*

## TROUBLESHOOTING

ISSUE	SOLUTION
<b>DEADBOLT NOT ENGAGING IN DOOR FRAME OR DOOR HARD TO LOCK</b>	Adjust the strike plate to make sure there is no obstructions. Make sure lock assembly is installed centered and aligned with the lock cutout.
<b>INSIDE DOOR HANDLE DOES NOT OPEN THE DOOR</b>	Make sure back face (Fig. 1B) is installed appropriately with the handle in the locked position. If it's not installed appropriately, the latch "tooth" will not engage when the handle is pulled.

Email us at [info@latchit.org](mailto:info@latchit.org) with any questions or concerns!



# 07 How to Remove the Top Lock Cylinder

## WHY WOULD I DO THIS?

▶ To replace defective lock cylinder OR to key alike this lock against other LATCH.IT RV Locks.

1. Insert mechanical key to top lock cylinder & turn to “unlocked” position **(Fig. 2)**.
2. Pull and hold exterior door handle in open position.
3. Use flathead screwdriver provided to press in tab. This tab holds in lock cylinder in place **(Fig. 3)**.
4. Pull lock cylinder out with the help of the inserted key.
5. To re-install, simply re-insert it carefully and avoid hitting the tab.

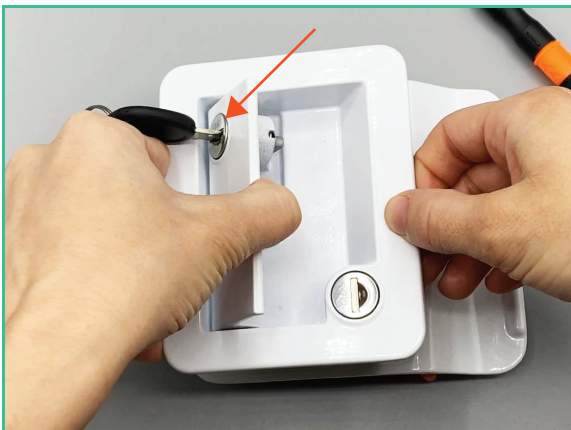


FIG 2

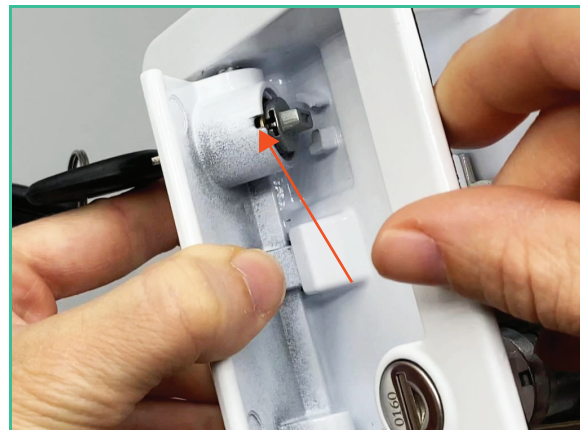


FIG 3

## 08 Frequently Asked Questions

1. **What do I do if I lose my mechanical key?**

A. Please reach out to us at [info@latchit.org](mailto:info@latchit.org). Make sure you have your mechanical key # ready.

2. **Who do I contact with any questions about installing or functionality?**

A. You can contact us at [info@latchit.org](mailto:info@latchit.org) ANYTIME and we'll respond within a few hours!

3. **What kind of warranty do you offer with your locks?**

A. At [latch.it](http://latch.it), we believe in all our products. That is why we offer a Lifetime Warranty on ALL our locks. Simply make sure to register for your Lifetime Warranty on our website [www.latchit.org](http://www.latchit.org)

4. **Is my RV Door Lock waterproof?**

A. Your new latchit lock is rain-proof. We highly recommend against using high-pressure washers directly on the lock.

5. **Where can I find a video walk-through of all your instructions?**

A. You can find that at [www.latchit.org](http://www.latchit.org).

6. **Why does my handle get stuck in the open position?**

A. The tooth for the interior door handle is getting stuck behind the chrome latch on the inside of the lock. This could be due to the lock not being fully tightened or the door thickness being outside of the measurements we recommend in our fit guide. Contact [info@latchit.org](mailto:info@latchit.org)